



## PANAX RED 2RS

### PRODUCT SPECIFICATION

Color Index	Pigment Red 48:2
C.I No.	15865:2
Chemical Type	Monoazo
CAS No.	7023-61-2
EU No.	230-303-5

### TYPICAL PROPERTIES

Appearance	Red Powder
pH (2% aqueous)	7 ~ 9      ISO 787-9
Specific gravity	1.9g/ cm <sup>3</sup> ISO 787-10
Bulk volume	580 cm <sup>3</sup> /100g      ISO 787-11
Oil absorption	35g/100g      ISO 787-5

### PHYSICAL PROPERTIES

Acid	4	DIN EN ISO 20105-A03
Alkali	2	DIN EN ISO 20105-A03
Water	4	ISO 2836
Ethanol	3	ISO 2836
Xylene	4	ISO 2836
MEK	4	ISO 2836
DOP	4	ISO 2836
Heat / 150°C, 10 min	5	ISO 787-21
Heat / 210°C, 10 min	3	ISO 787-21
Light 1/3 SD	6	ISO 105-B01
Light 1/25 SD	5	ISO 105-B01

### STANDARD PACKAGING

Paper bags	10 kg
Big Bags type C	On request

Our product specific end application information are based upon our current knowledge. They are presented without any representation or warranty concerning the suitability, performance or correctness of the product for a particular application or use. Significant variations can occur between test results and results obtained in actual use. We strongly advise that the customer test the product in the specific intended application under conditions expected during use.

### HEAD-OFFICE

UKSEUNG CHEMICAL CO., LTD.  
 #174, GAEJWA-RO, GEUMJEONG-GU, BUSAN KOREA / 46259  
 Tel.: +82 51-718-5345~5348  
 Fax: +82 51-529-7272  
 Email: trade@ukseung.co.kr  
 http://www.ukseung.co.kr

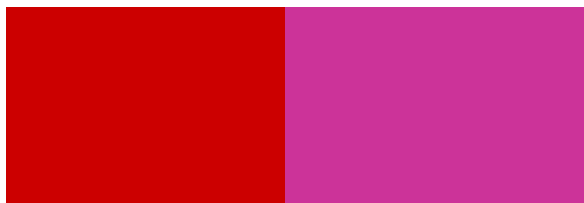
### EUROPE OFFICE

UKSEUNG Europe GmbH  
 Hauptstrasse 14, D-63860 Rothenbuch, Germany  
 Tel. : +49 6094 9897 426  
 Fax: +49 6026 9897 427  
 Email: info@ukseung-europe.de  
 http://www.ukseung-europe.de

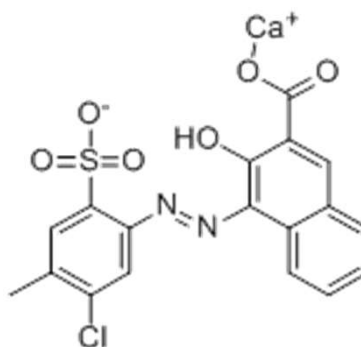
UKSEUNG CHEMICAL CO., LTD.

Updated on Sep. 2017 / 3rd Revision

### FULL SHADE REDUCTION 1:25 TiO2



### CHEMICAL STRUCTURE



Molecular formular      C<sub>18</sub>H<sub>11</sub>CaClN<sub>2</sub>O<sub>6</sub>S  
 Molecular Weight      459

### APPLICATIONS

Oil Ink      recommended  
 Solvent Ink  
 Water Flexo Ink  
 Paint (Oil Base)  
 Paint (Water Base)  
 Plastics      recommended  
 Textile  
 Artist Color