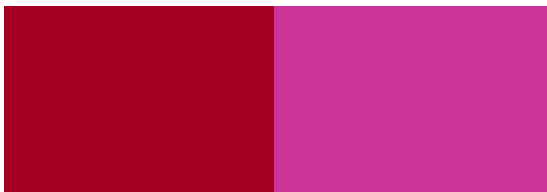


PANAX RED 4621

PRODUCT DESCRIPTION

Color Index	Pigment Red 146
C.I. No.	12485
Chemical Type	Monoazo
CAS No.	5280-68-2
EU No.	226-103-2

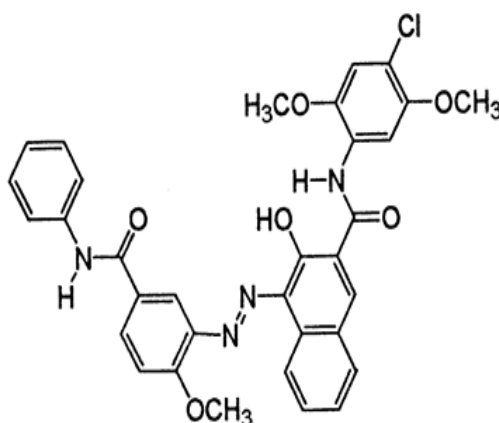
FULL SHADE REDUCTION 1::25 TiO2



PHYSICAL DATA

Appearance	Red Powder
pH (2% aqueous)	6.5 ~ 7.5 ISO 787-9
Specific gravity	1.35 g/cm ³ ISO 787-10
Bulk volume	680cm ³ /100g ISO 787-11
Oil absorption	40 g/100 g ISO 787-5

CHEMICAL STRUCTURE OF THE PIGMENT



FASTNESS PROPERTIES

Acid	5	DIN EN ISO 20105-A03
Alkali	5	DIN EN ISO 20105-A03
Water	5	ISO 2836
Ethanol	4-5	ISO 2836
Xylene	4-5	ISO 2836
MEK	4	ISO 2836
DOP	5	ISO 2836
Heat / 150°C, 10 min	5	ISO 787-21
Heat/ 210°C, 10 min	5	ISO 787-21
Light 1/3 SD	7-8	ISO 105-B01
Light 1/25 SD	7-8	ISO 105-B01

Molecular Weight	611.04
Molecular formula	C ₃₃ H ₂₇ ClN ₄ O ₆

APPLICATION RECOMMENDATION

Solvent gravure	recommended
Water base flexo	recommended
Offset	-
Paint	recommended
Plastics	-

STANDARD PACKAGING

Paper bags	25 kg
Big Bags type C	On request

Our product specific end application information are based upon our current knowledge. They are presented without any representation or warranty concerning the suitability, performance or correctness of the product for a particular application or use. Significant variations can occur between test results and results obtained in actual use. We strongly advise that the customer test the product in the specific intended application under conditions expected during use.

HEAD-OFFICE

#155-8, HAIDONG-DONG, KEUMJEONG-KU
BUSAN, KOREA
Tel.: +82 51 5231515 8
Fax: +82 51 5296326
Email: trade@ukseung.co.kr
<http://www.ukseung.co.kr>

EUROPE OFFICE

UK SEUNG Europe GmbH Kirchrainstr. 7
D-63762 Grossostheim, Germany
Tel. : +49 6026 9997875
Fax: +49 6026 9997881
Email: info@ukseung-europe.de
<http://www.ukseung-europe.de>